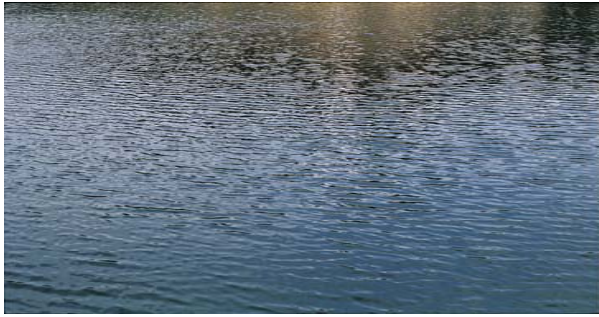


IMPORTANT PHONE NUMBERS AND USEFUL INFORMATION



Northern Palm Beach County Improvement District

www.npbcid.org
(561)-624-7830

South Florida Water Management District

www.sfwmd.gov
(877)-429-1294 or (561) 682-6234

PBC Emergency Operations

www.pbcgov.com/pubsafety/eoc
(561)-712-6400
◆◆◆◆◆◆
www.fema.gov
www.swa.org
www.redcross.org
www.weatherchannel.com
www.floodsmart.gov

To report a blocked canal or waterway, or notice any illegal dumping into the canals, please contact Northern's Operations and Maintenance Staff at (561) 624-7830.

Northern tries to coexist with nature as much as possible. The wetland area and preserves are natural components of a floodplain. The canal banks and buffers are designed to reduce flood damage and spread the water over a large geographical area and can help reduce the speed of the water flowing out of the structures. There will be at times, soil erosion and localized flooding that cannot be prevented.



Northern Palm Beach County Improvement District

357 Hiatt Drive
Palm Beach Gardens, FL 33418
www.npbcid.org

Phone: (561) 624 -7830
Fax (561)- 624-7839



Flooding and Drainage Information for Northern Residents



BEFORE, DURING AND AFTER THE STORM

PRIOR TO A STORM

What does Northern do?

Northern will “draw down” or lower the water level to compensate for the anticipated amount of rainfall. You may notice a change in the water levels days before a storm actually hits our area.

Flooding can be caused by large amounts of rainfall in a short period of time, especially if the ground is already saturated (Typical of our South Florida weather patterns from June through November), or by storm water runoff.

Northern staff works diligently before an encroaching storm to monitor water levels and discharge excess water to minimize flooding. During the storms, our automated telemetry system allows staff to watch the water levels and operate the pump stations remotely. Currently 59 different sites are monitored at the same time from a remote location. Reaction time has been reduced by 50% due to automatic notifications if there is an emergency situation at one of the pump stations.

What can residents do?

When a storm is approaching, it is advisable to stake the location of the drain in case the area is under water. This makes it easier to locate a drain that may become clogged by storm debris. Another tip is to stake the sides of roadways that are known to flood so that the

boundaries are more identifiable. Clear any loose debris, grass clippings, branches etc. from your yards and dispose of them properly.

DURING THE STORM

Seek shelter or evacuate the area in time of the storm to ensure the safety of all persons and pets. Listen to radio and television broadcasts, if possible, for instructions and updates on the weather. Do not attempt to unclog a drain during the storm- you may be hit by flying debris, lightning or come in contact with a downed electrical line. Be sure to notify friends and relatives of where you will be and how to contact you.

During periods of high rain, when water levels are above control the gate will open to allow maximum discharge of storm waters. In addition the gate, along with other water control structures, can be opened prior to a tropical storm or other projected heavy rain event to allow maximum storage prior to, and maximum recovery immediately after an event. The fixed wier component of a structure will allow discharges over control to manage minor fluctuations in water levels where gate operation is not warranted. These structures are equipped with a radio telemetry system that communicates with Northern’s main office, which allows automatic operation of the gates (during periods of heavy rains), and manual operation (prior to tropical storm events).

Northern has also purchased a portable generator to continually power the pump stations in the event of electrical failures. All stations have been equipped with quick connects for faster installation. Northern also has a portable fuel transport tank. In addition to its redundant operation capabilities, wireless access and backup generators, Northern is prepared for continuous service throughout a storm event.

Other tips:

DO NOT Tape your windows-and DO NOT “crack open “ your window to let air flow through. Keep the wind out of your home.

AFTER THE STORM

Do not explore or sight-see the damages until authorities have given the ok to do so. Beware of flooded roadways and downed electrical lines as well as debris in the streets from fallen trees and plants. The majority of flood hazard deaths occur after a storm due to drowning and electrocutions.

Please carefully consider obtaining flood insurance. Contact www.floodsmart.gov to determine if you live in a flood zone. This resource can provide useful information regarding the National Flood Insurance program. You may also want to contact your local insurance agent for further details.