

NAME OF PROJECT
PREPARED FOR
NORTHERN PALM BEACH COUNTY
IMPROVEMENT DISTRICT
UNIT OF DEVELOPMENT NO. (UNIT NO.)



LOCATION MAP

N/A

INDEX OF DRAWINGS

<u>TITLE</u>	<u>SHEET NUMBER</u>
--------------	---------------------



NORTHERN PALM BEACH
COUNTY IMPROVEMENT DISTRICT

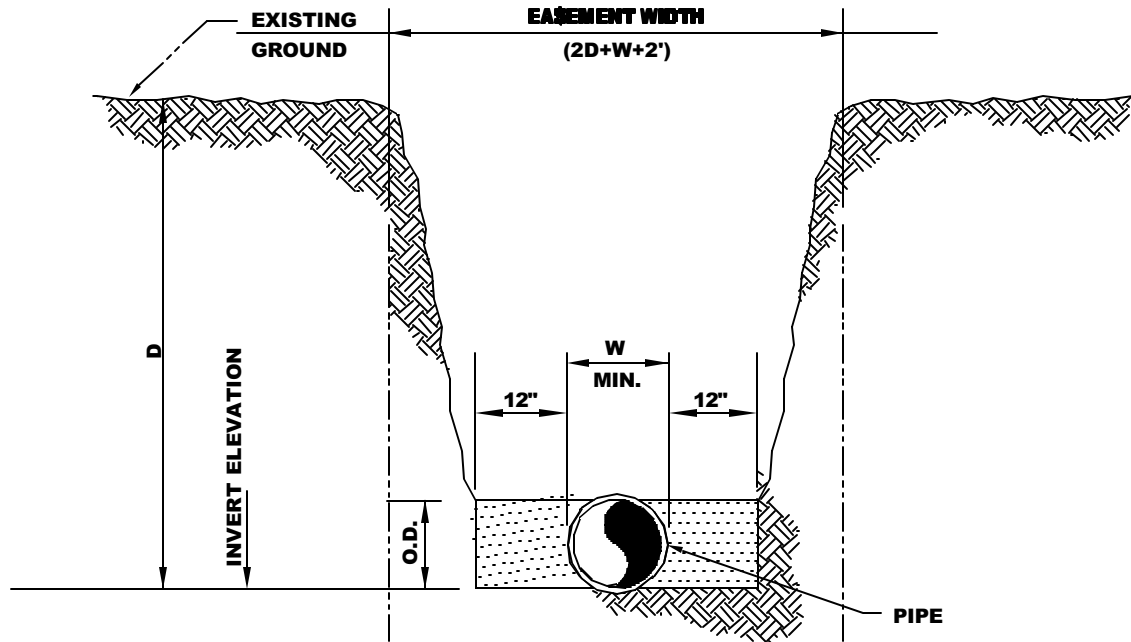
"THE UNDERSIGNED DOES HEREBY CERTIFY (THE TERM "CERTIFY" IS USED AS DEFINED IN CHAPTER 600.00(6)(1)(G) FLORIDA ADMINISTRATIVE CODE) IN FAVOR OF NORTHERN PALM BEACH COUNTY IMPROVEMENT DISTRICT THAT, IN MY PROFESSIONAL OPINION, THESE PLANS COMPLY WITH THE REQUIREMENTS OF NORTHERN PALM BEACH COUNTY IMPROVEMENT DISTRICT AND OTHER APPLICABLE GOVERNMENTAL ENTITY(S) REQUIREMENTS. NORTHERN PALM BEACH COUNTY IMPROVEMENT DISTRICT IS HEREBY AUTHORIZED AND ENTITLED TO RELY UPON SAME FOR CONSTRUCTION OF PUBLIC IMPROVEMENTS."

**NORTHERN PALM BEACH COUNTY
IMPROVEMENT DISTRICT**

NAME OF PROJECT

SECTION XX TOWNSHIP XXS RANGE XXE

NPBCID PROJECT NUMBER		
DRAWN BY:	DATE	
DESIGNED BY:	SCALE	AS NOTED
	SHEET	X OF X



STANDARD EASEMENT DETAIL

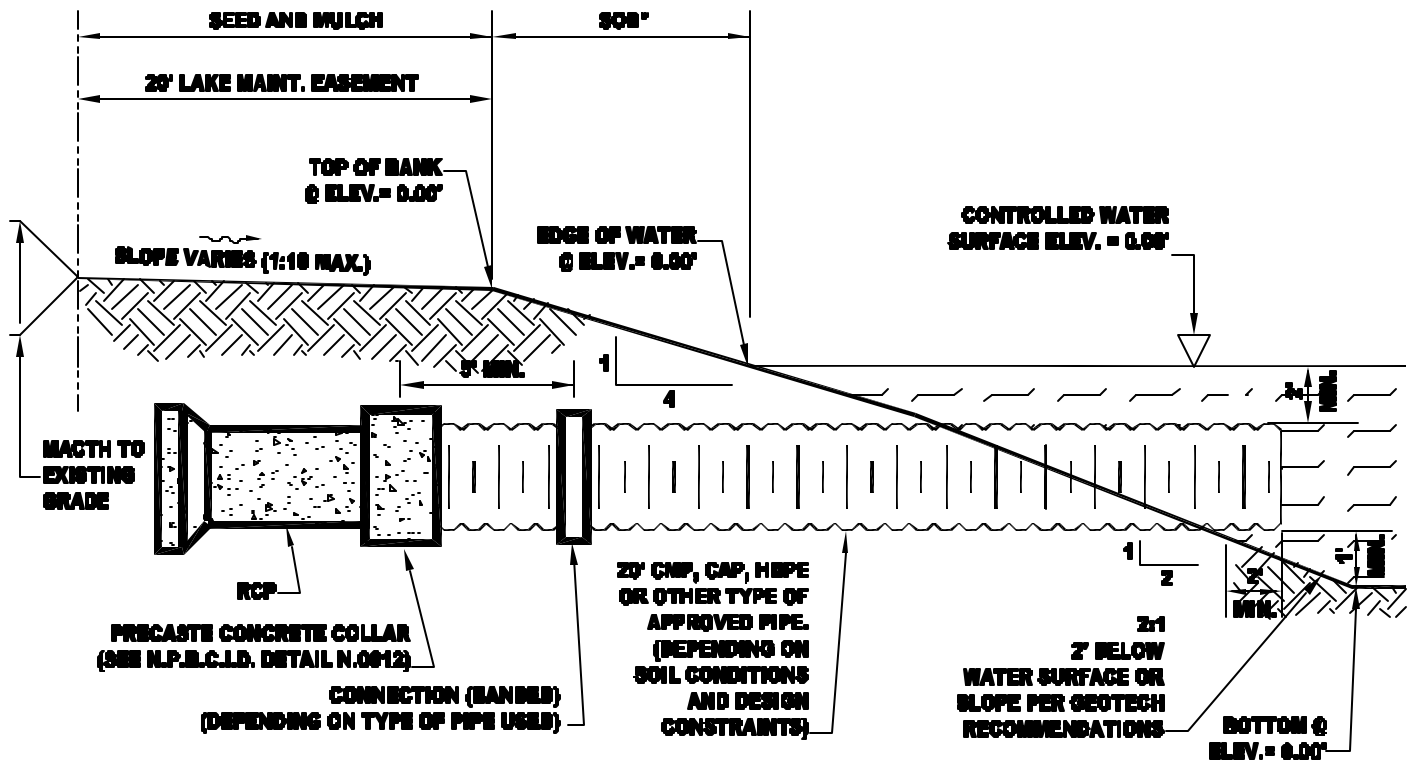
N.T.S.



NORTHERN PALM BEACH
COUNTY IMPROVEMENT DISTRICT

NO.	DATE	REVISIONS
1.	08/10/02	UPDATED
2.		
3.		
4.		

DATE	12-27-02
SCALE	N.T.S.
DWG. NO.	N-002
DRAWN BY	MCS
CHECKED BY	B.J.L.



NOTES:

- 1.) SEED AND MULCH BANKS MAY BE ALLOWED FOR NEW LAKE CONSTRUCTION ONLY.
- 2.) SOIL CONDITIONS SHOULD BE CONSIDERED WHEN SELECTING PIPE FOR OUTFALL.

TYPICAL LAKE BANK RESTORATION AND DRAINAGE OUTFALL

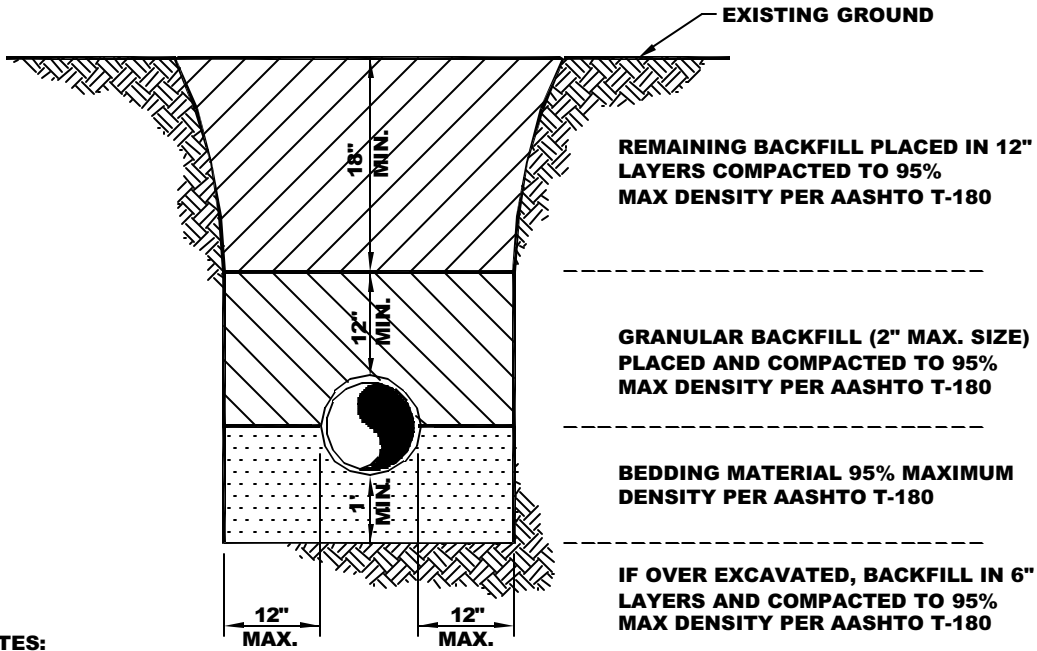
N.T.S.



NORTHERN PALM BEACH
COUNTY IMPROVEMENT DISTRICT

NO.	DATE	REVISIONS
1.		
2.		
3.		
4.		

DATE	12-27-02
SCALE	N.T.S.
DWG. NO.	N-003
DRAWN BY	ECB
CHECKED BY	S.J.L.



NOTES:

- 1. BEDDING SHALL CONSIST OF IN-SITU GRANULAR MATERIAL OR WASHED AND GRADED LIME ROCK 3/8" - 7/8" SIZING. UNSTABLE IN-SITU MATERIALS SUCH AS MUCK, DEBRIS AND LARGER ROCK SHALL BE REMOVED.**
- 2. BACKFILL REQUIREMENTS SHOULD BE PER THIS DETAIL OR AS REQUIRED BY UTILITY FOR FACILITIES NOT OWNED BY NORTHERN, WHICH EVER IS MORE STRINGENT.**

PIPE BACKFILL REQUIREMENTS

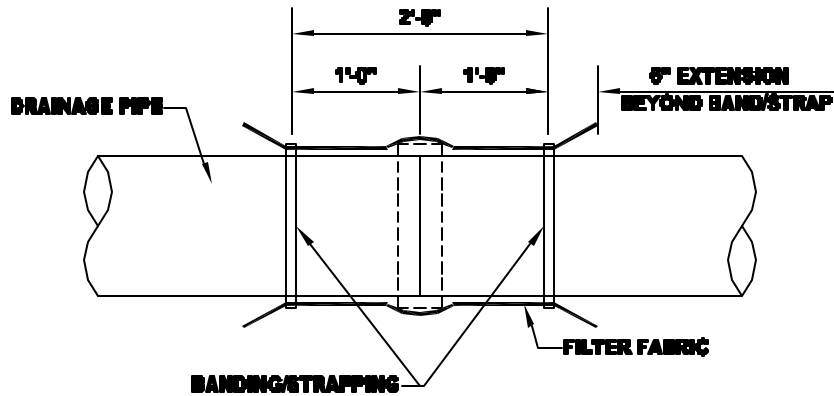
N.T.S.



NORTHERN PALM BEACH COUNTY IMPROVEMENT DISTRICT

NO.	DATE	REVISIONS
1.		
2.		
3.		
4.		

DATE	12-27-02
SCALE	N.T.S.
DWG. NO.	N-004
DRAWN BY	MCS
CHECKED BY	BJL



NOTE:

- FILTER FABRIC SHALL BE OVERLAPPED 1'-0" MINIMUM AT ALL DRAINAGE PIPE JOINTS.
- ALL DRAINAGE PIPES ARE TO BE WRAPPED AT EACH JOINT.

FILTER FABRIC JOINT WRAP

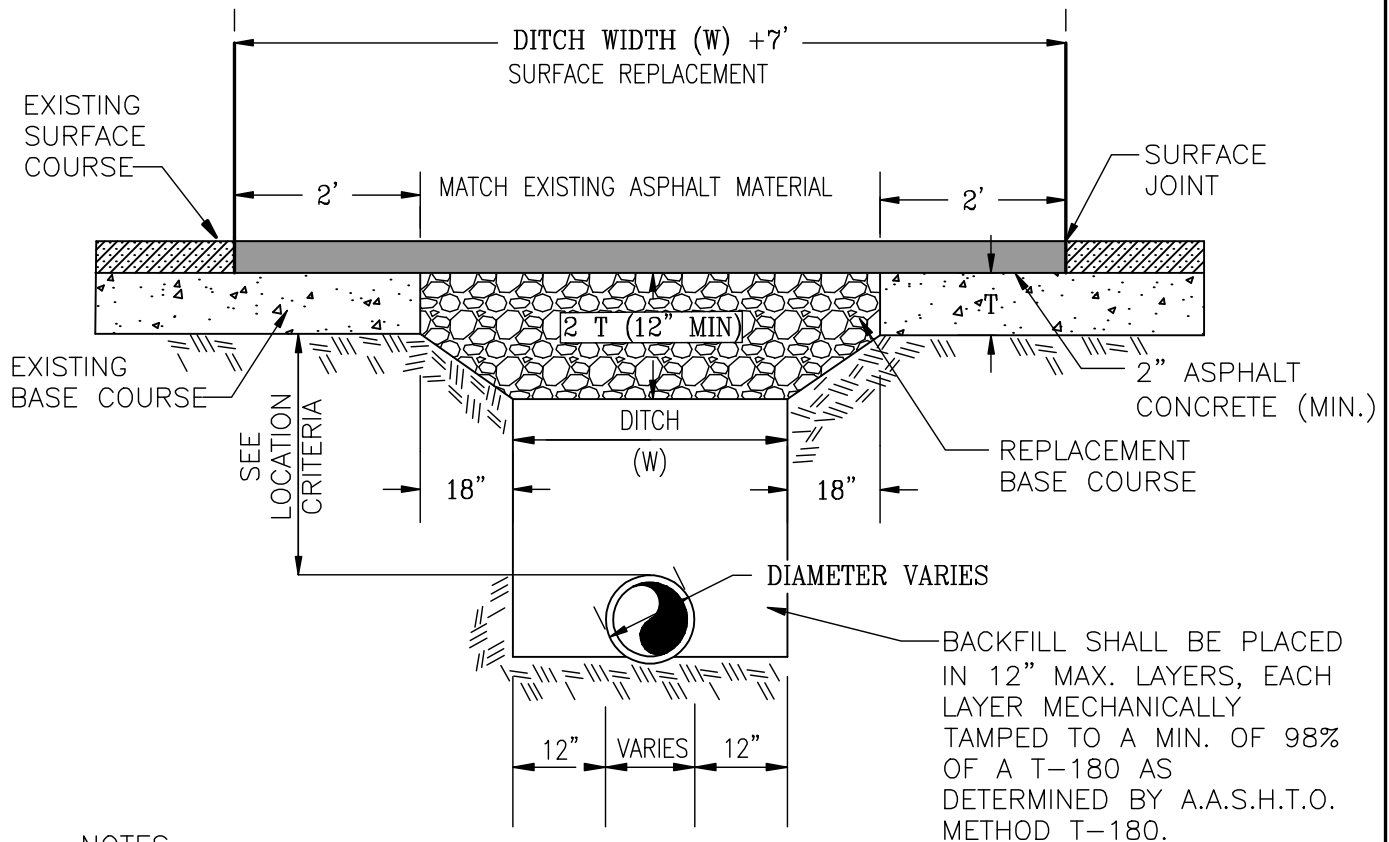
N.T.S.



NORTHERN PALM BEACH
COUNTY IMPROVEMENT DISTRICT

NO.	DATE	REVISIONS
1.		
2.		
3.		
4.		


DATE	12-27-02
SCALE	N.T.S.
DRAW. NO.	N-005
DRAWN BY	MCE
CHECKED BY	B.J.

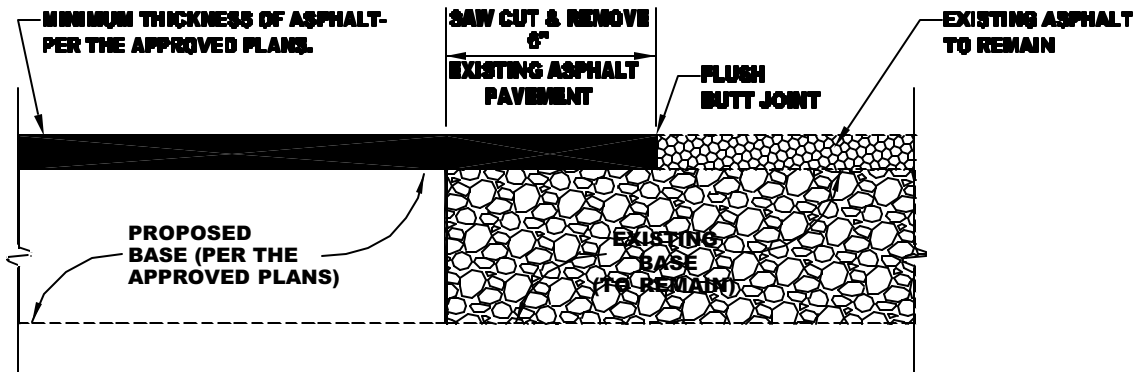


NOTES:

1. REPLACED BASE MATERIAL OVER DITCH SHALL BE TWICE THE THICKNESS OF THE ORIGINAL BASE.
2. BASE MATERIAL SHALL BE PLACED IN LIFTS (4" MAX) AND EACH LIFT THOROUGHLY ROLLED OR TAMPED. COMPACTION SHALL BE 98%(MIN.) DENSITY AS DETERMINED BY A.A.S.H.T.O. T-180.
3. ASPHALT CONCRETE PAVEMENT JOINTS SHALL BE MECHANICALLY SAWED.
4. THE BASE MATERIAL SHALL BE APPROVED BY THE DISTRICT ENGINEER.
5. SURFACE MATERIAL WILL BE CONSISTENT WITH EXISTING SURFACE.
6. TRAFFIC SAFETY AND CONTROL SHALL BE IN CONFORMANCE WITH THE MANUAL ON UNIFORM TRAFFIC CONTROL DEVICES AND FDOT STANDARD SPECIFICATIONS.
7. ALL ITEMS FOR PAVEMENT REPLACEMENT TRENCHING SHALL BE INCLUDED IN UNIT COST OF PIPE.
8. ALL DISTURBED STRIPING TO MATCH EXISTING STRIPING IN MATERIAL TYPE. STRIPING & SIGNAGE TO CONFORM TO LATEST PBC TYPICALS FOR PAVEMENT MARKINGS, SIGNING & GEOMETRICS.
9. PAVEMENT DETAIL SHOULD CONFORM TO THE REGULATORY AGENCY REQUIREMENTS IF THEIR STANDARDS ARE MORE STRINGENT.

PAVEMENT REPLACEMENT DETAIL
NOT TO SCALE

REV: SEP. 2009		NORTHERN PALM BEACH COUNTY IMPROVEMENT DISTRICT	SCALE: N.T.S.
FIELD: N/A			DATE: DEC. 2002
DRAWN: KAL			P.A.NO. WF0590
APPR: RWL			DR. NO. N-006



NOTE:

**CONTRACTOR TO REMOVE ALL LOOSE ASPHALT AND POWER BROOM
 CLEAN ALL ASPHALT SURFACES PRIOR TO OVERLAY. A LEVELING
 COURSE SHALL BE CONSTRUCTED ON THE EXISTING ASPHALT TO
 REMOVE UNEVEN SURFACES.**

ASPHALT PAVEMENT JOINT

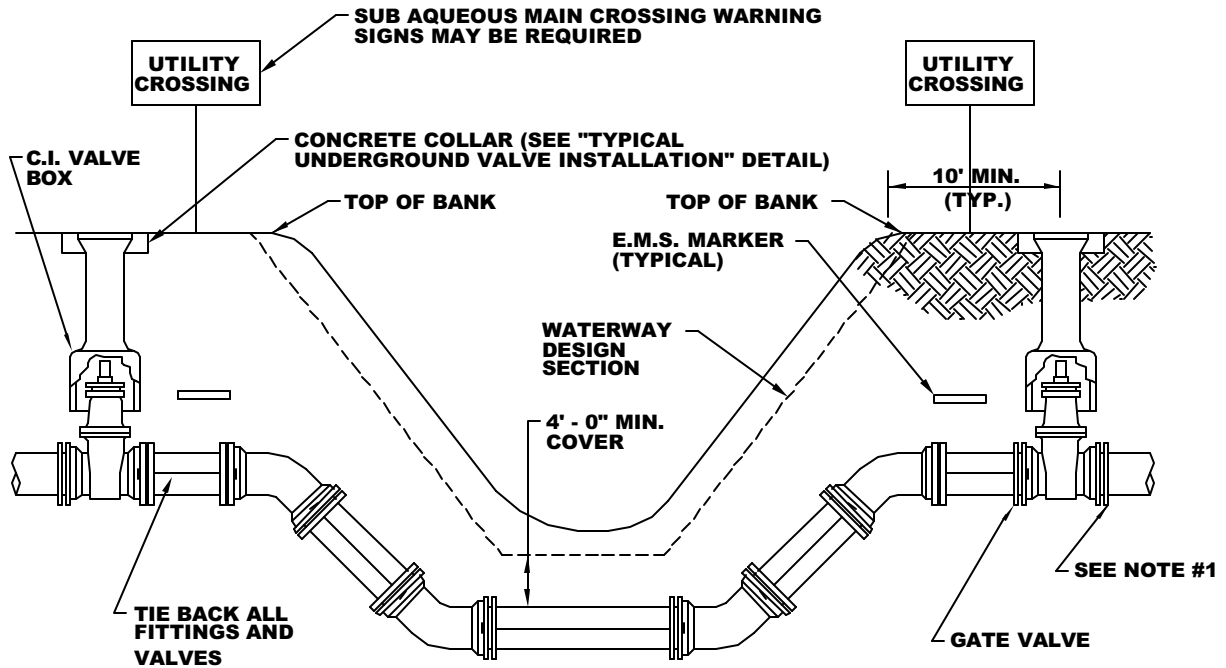
N.T.S.



NORTHERN PALM BEACH
 COUNTY IMPROVEMENT DISTRICT

NO.	DATE	REVISIONS
1.		
2.		
3.		
4.		

DATE	12-27-02
SCALE	N.T.S.
DWG. NO.	N-007
DRAWN BY	MCE
CHECKED BY	BJL



NOTES:

- 1. VALVES TO TIE BACK TO THE NEAREST FITTING ON EACH SIDE. ALL THE RODS AND BOLTS SHALL BE COATED WITH KOPPER'S 300-M OR APPROVED EQUAL.**
- 2. VALVES EXTENSIONS AND BOXES LOCATED IN THE MAINTENANCE BASEMENT SHALL BE WITH N.P.B.C.L.D. APPROVAL.**
- 3. MECHANICAL RESTRAINT REQUIRED. CONCRETE THRUST BLOCKS WILL NOT BE AN ACCEPTABLE METHOD OF RESTRAINT.**

STANDARD SUBAQUEOUS CROSSING

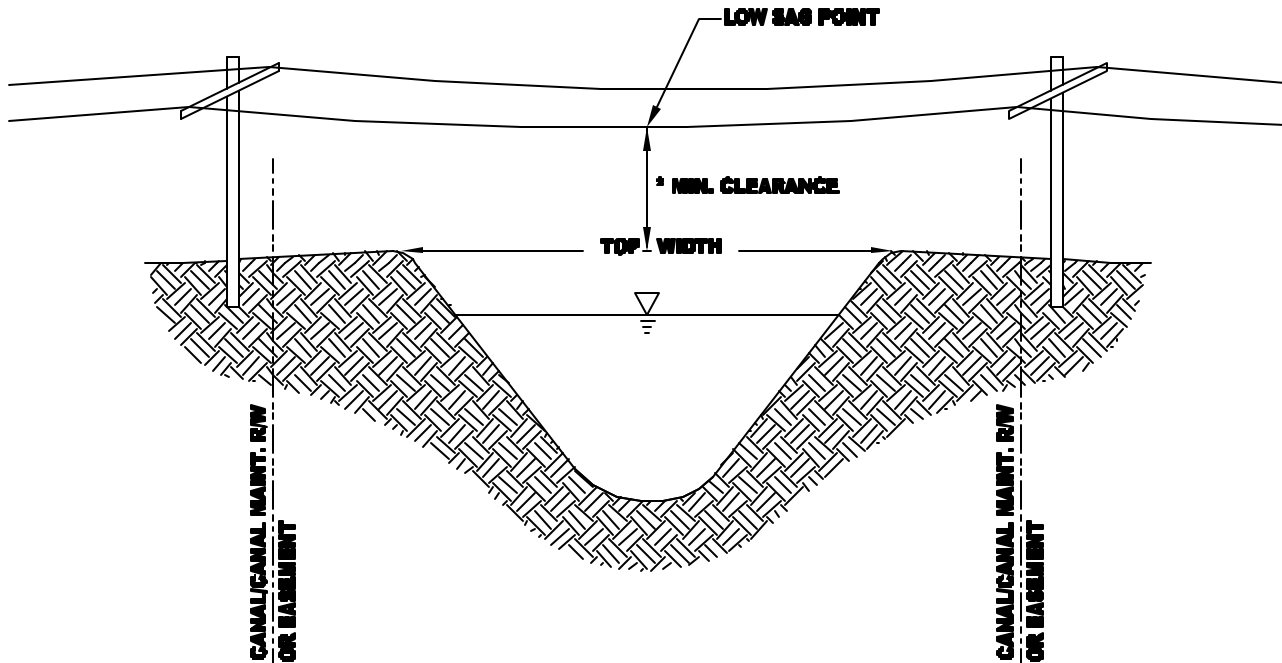
N.T.S.



NORTHERN PALM BEACH
COUNTY IMPROVEMENT DISTRICT

NO.	DATE	REVISIONS
1.		
2.		
3.		
4.		

DATE	12-27-02
SCALE	N.T.S.
DWG. NO.	N-008
DRAWN BY	MCB
CHECKED BY	R.J.L.



DESIGN TOP WIDTH OF CANAL (FT)	* MINIMUM CLEARANCE ABOVE CANAL BANK (FT)
LESS THEN 30'	35'
30'-45'	40'
GREATER THAN 45'	45'

NOTES:

1. POLES, LINES, & SUPPORTS MUST BE LOCATED OUTSIDE CANAL R/W, CANAL MAINTENANCE R/W, & EASEMENTS.
2. THE ABOVE MINIMUM VERTICAL CLEARANCES ARE BASED ON CLEARANCE NORMALLY NEEDED FOR CANAL MAINTENANCE EQUIPMENT, FEDERAL, STATE OR LOCAL CODES, SUCH AS THE NATIONAL ELECTRIC SAFETY CODE MAY REQUIRE HIGHER CLEARANCES AND SHOULD BE ADHERED TO.

TYPICAL OVERHEAD POWER LINE CANAL CROSSING

N.T.S.



NORTHERN PALM BEACH COUNTY IMPROVEMENT DISTRICT

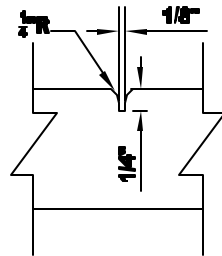
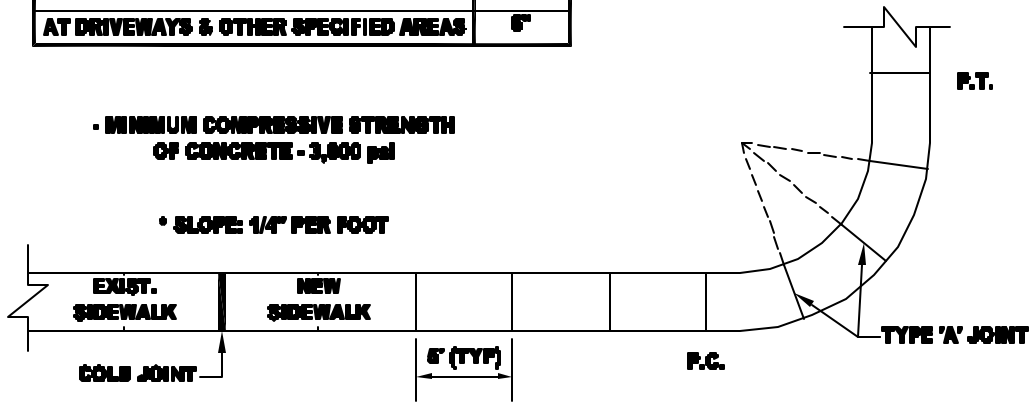
NO.	DATE	REVISIONS
1.		
2.		
3.		
4.		

DATE	12-27-02
SCALE	N.T.S.
DWG. NO.	N-088
DRAWN BY	MCS
CHECKED BY	EJL

TABLE OF SIDEWALK THICKNESS - 'T'	
LOCATION	T'
RESIDENTIAL AREAS	4"
AT DRIVEWAYS & OTHER SPECIFIED AREAS	6"

• MINIMUM COMPRESSIVE STRENGTH OF CONCRETE - 3,800 psi

• SLOPE: 1/4" PER FOOT



TYPE 'A' - 1/4" DUMMY JOINTS, TOOLED

CONCRETE SIDEWALK

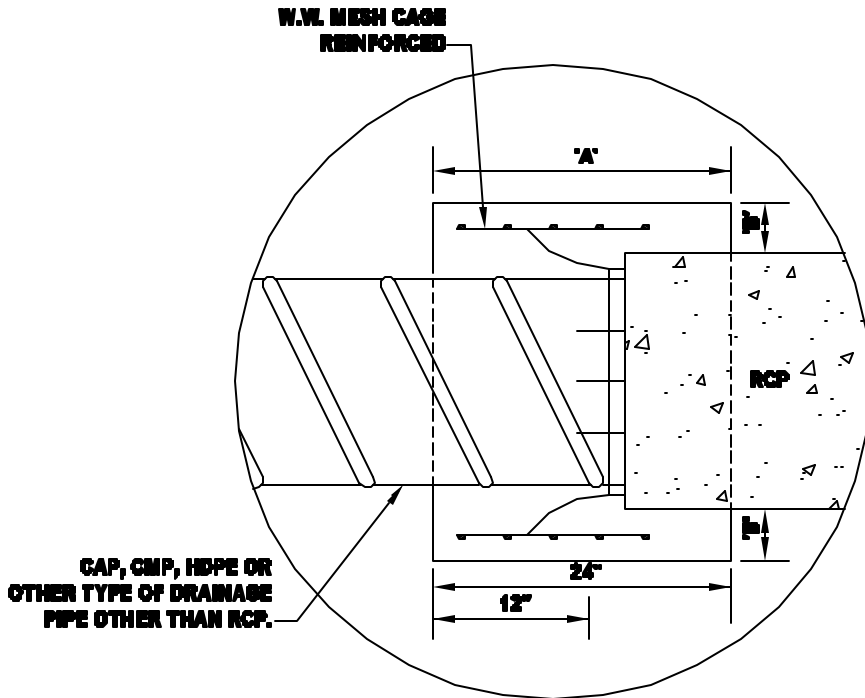
N.T.S.



NORTHERN PALM BEACH
COUNTY IMPROVEMENT DISTRICT

NO.	DATE	REVISIONS
1.		
2.		
3.		
4.		

DATE	12-27-02
SCALE	N.T.S.
DWG. NO.	N-010
DRAWN BY	MGB
CHECKED BY	B.J.L.



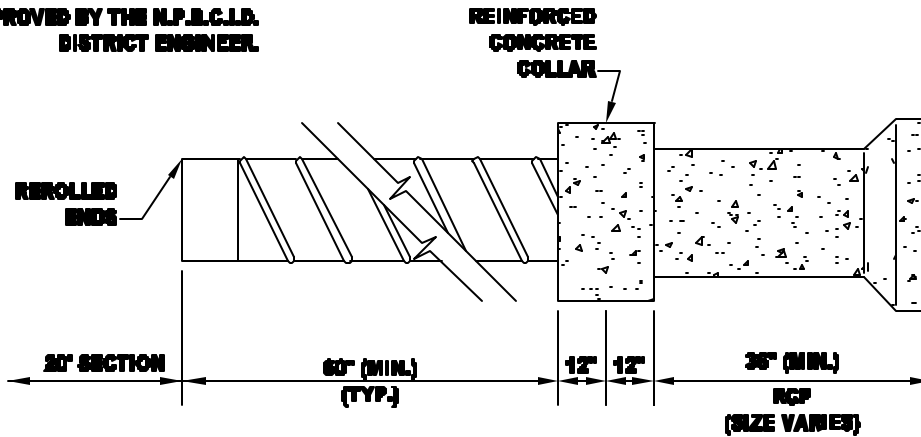
0-30"	A=24" B=6"
36"-60"	A=36" B=9"
66" AND ABOVE	A=36" B=12"

CONNECTION DETAIL

N.T.S.

NOTE:

IF THE PIPE MATERIAL IS DIFFERENT THAN STATED ABOVE IT IS TO BE APPROVED BY THE N.P.B.C.I.D. DISTRICT ENGINEER.



SECTION

N.T.S.

PRE-CAST CONCRETE ADAPTER COLLAR

N.T.S.

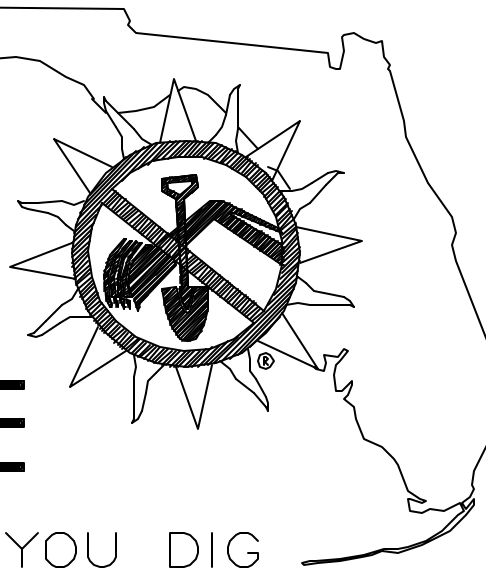


NORTHERN PALM BEACH COUNTY IMPROVEMENT DISTRICT

NO.	DATE	REVISIONS
1.		
2.		
3.		
4.		

DATE	12-27-02
SCALE	N.T.S.
DWG. NO.	N-011
DRAWN BY	MCD
CHECKED BY	E.J.

CALL SUNSHINE



48 HOURS BEFORE YOU DIG

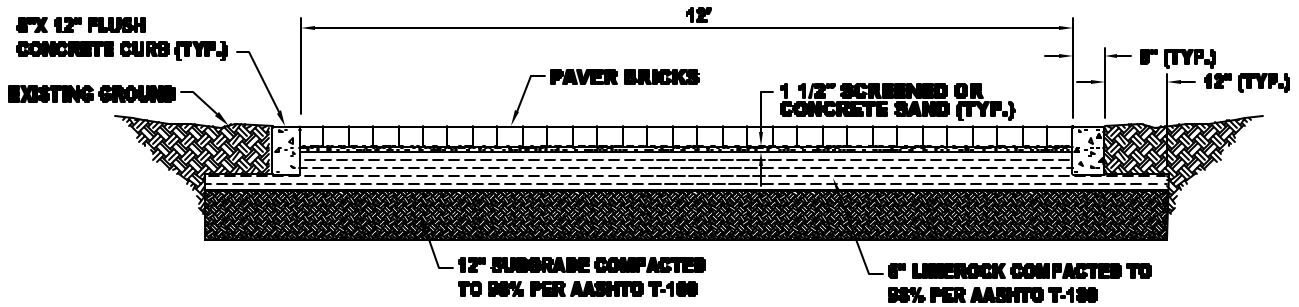
1-800-432-4770



NORTHERN PALM BEACH
COUNTY IMPROVEMENT DISTRICT

NO.	DATE	REVISIONS
1.		
2.		
3.		
4.		

DATE	12-27-02
SCALE	N.T.S.
DWG. NO.	N-012
DRAWN BY	ESB
CHECKED BY	D.J.L.



PAVER BLOCK INSTALLATION:

1. PLACE BEDDING COURSE OF SHARP, NORMAL WEIGHT SCREENING OR CONCRETE SAND TO A UNIFORM DEPTH OF APPROXIMATELY 1-1/2 IN. LEVELED TO GRADE.
2. INSTALL PAVER BLOCK UNITS WITH JOINTS APPROXIMATELY 1/8 IN. SPACING.
3. WHEN REQUIRED CUT PAVING STONES WITH AN APPROVED CUTTER TO FIT ACCURATELY, NEATLY AND WITHOUT DAMAGED EDGES.
4. TAMP PAVING STONES WITH MECHANICAL VIBRATOR UNTIL UNIFORMLY LEVEL, TRUE TO GRADE AND FREE FROM MOVEMENT.
5. FILL VOIDS IN JOINTS BY SWEEPING IN A FINE, DRY MASONRY SAND.
6. PAVERS - 7 7/8" X 3 13/16" X 3 3/8".

TYPICAL ACCESS ROAD WITH PAVERS

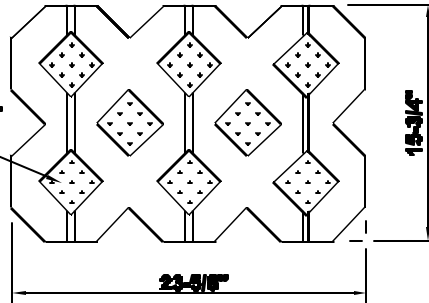


NORTHERN PALM BEACH
COUNTY IMPROVEMENT DISTRICT

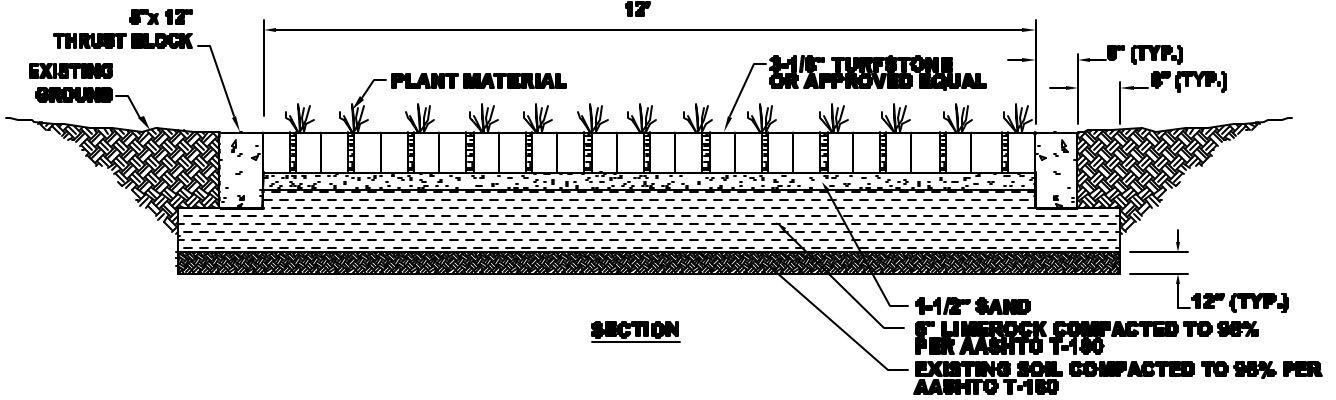
NO.	DATE	REVISIONS
1		
2		
3		
4		

DATE	12-27-02
SCALE	N.T.S.
DWG. NO.	N-043
DRAWN BY	MCB
CHECKED BY	B.J.

FILL VOIDS WITH CLEAN FILL MATERIAL
AND SEED WITH BAHIA SEED.



PLAN VIEW



SECTION

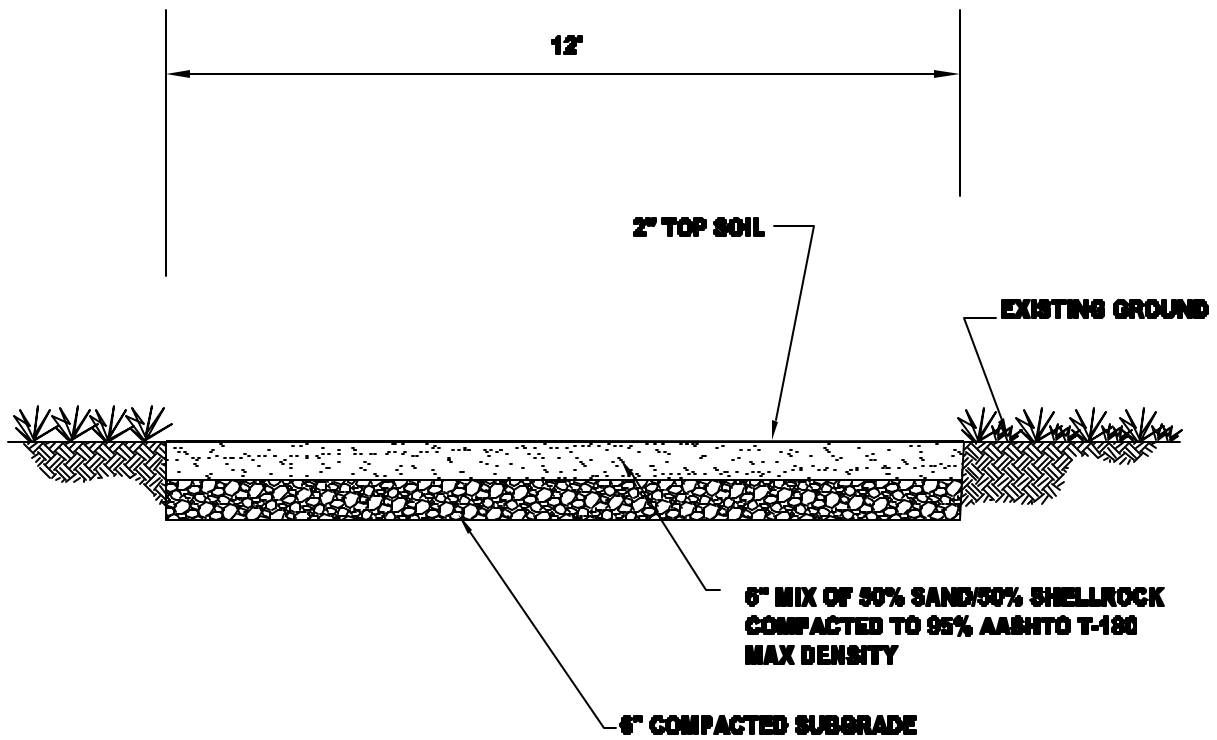
TYPICAL ACCESS ROAD WITH TURFSTONE



NORTHERN PALM BEACH
COUNTY IMPROVEMENT DISTRICT

NO.	DATE	REVISIONS
1.		
2.		
3.		
4.		

DATE	12-27-02
SCALE	N.T.S.
DWG. NO.	N-014
DRAWN BY	NCB
CHECKED BY	EJL



ACCESS ROAD-SAND/ROCK MIXTURE

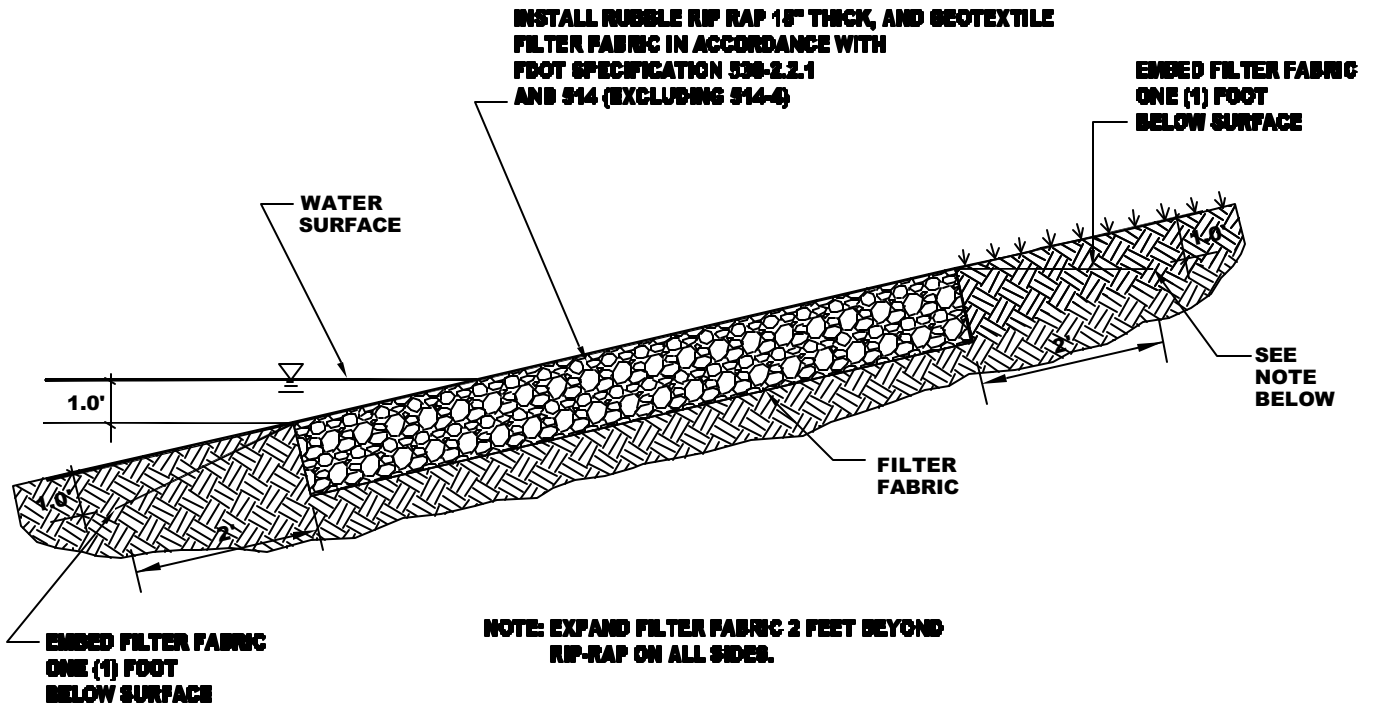
N.T.S.



NORTHERN PALM BEACH
COUNTY IMPROVEMENT DISTRICT

NO.	DATE	REVISIONS
1.		
2.		
3.		
4.		

DATE	12-27-02
SCALE	N.T.S.
DWG. NO.	N-015
DRAWN BY	NCE
CHECKED BY	B.J.L.



SLOPE PROTECTION RIP-RAP DETAIL

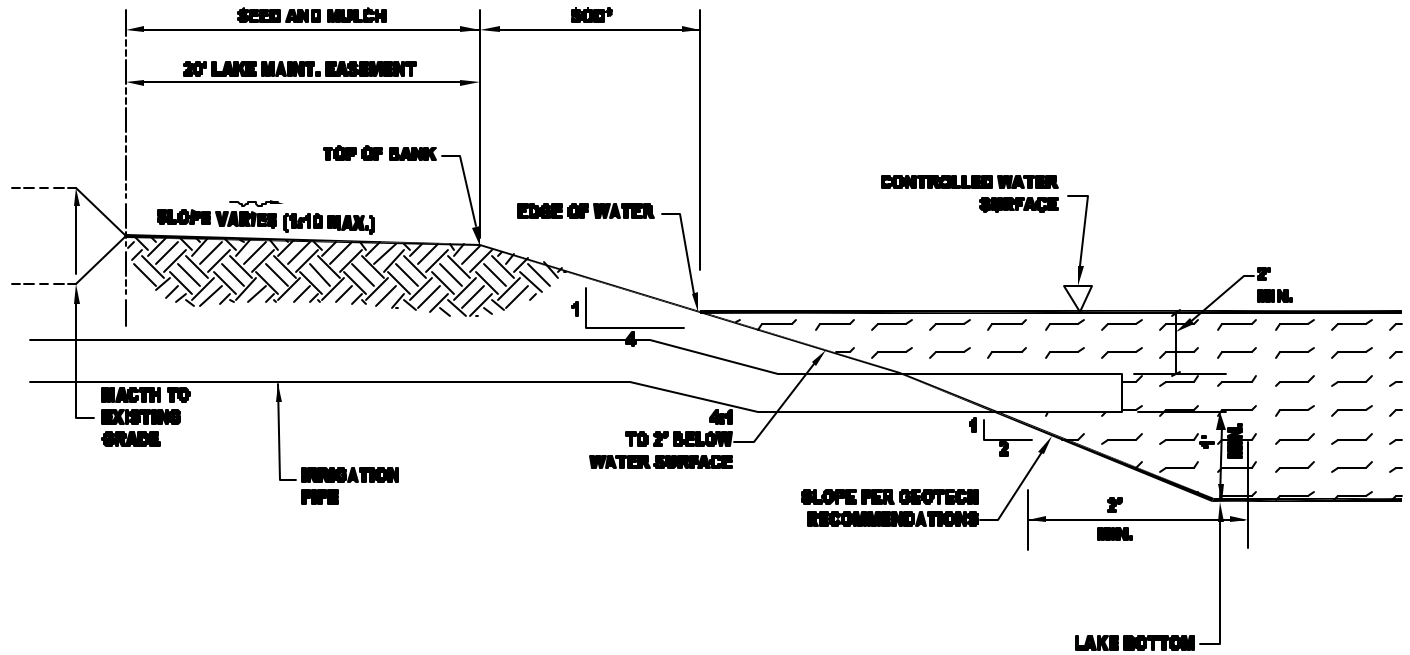
N.T.S.



NORTHERN PALM BEACH
COUNTY IMPROVEMENT DISTRICT

NO.	DATE	REVISIONS
1.		
2.		
3.		
4.		

DATE	12-27-02
SCALE	N.T.S.
DWG. NO.	N-010
DRAWN BY	NCB
CHECKED BY	B.J.L.



* SEED AND MULCH BANKS MAY BE ALLOWED FOR NEW LAKE CONSTRUCTION ONLY.

TYPICAL LAKE BANK RESTORATION AND IRRIGATION WITHDRAWAL

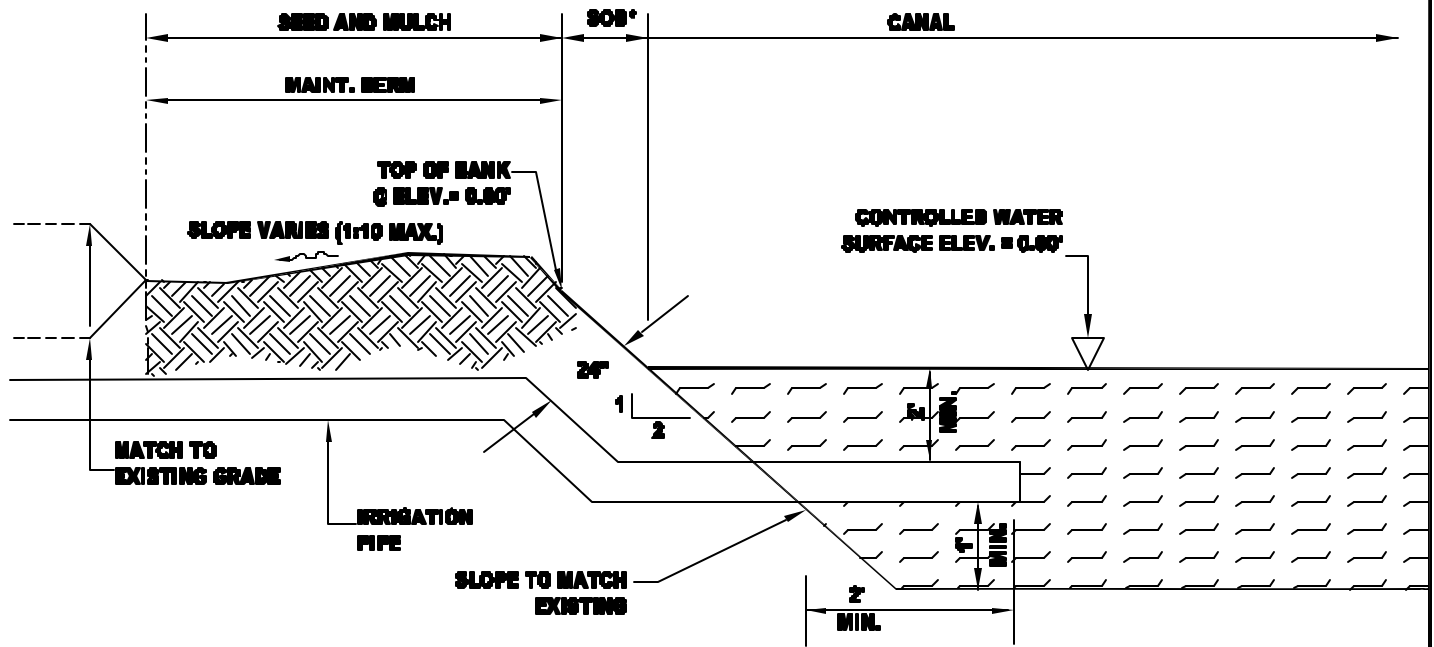
N.T.S.



NORTHERN PALM BEACH
COUNTY IMPROVEMENT DISTRICT

NO.	DATE	REVISIONS
1.		
2.		
3.		
4.		

DATE	6-27-03
SCALE	N.T.S.
DWG. NO.	N-017
DRAWN BY	TNS
CHECKED BY	B.J.L.



NOTE:

- 1.) DISTURBED BANKS SHALL BE COMPACTED TO 85% MAXIMUM DENSITY PER AASHTO T-190 AND SOODED.

TYPICAL IRRIGATION WITHDRAWAL DETAIL AND CANAL BANK RESTORATION

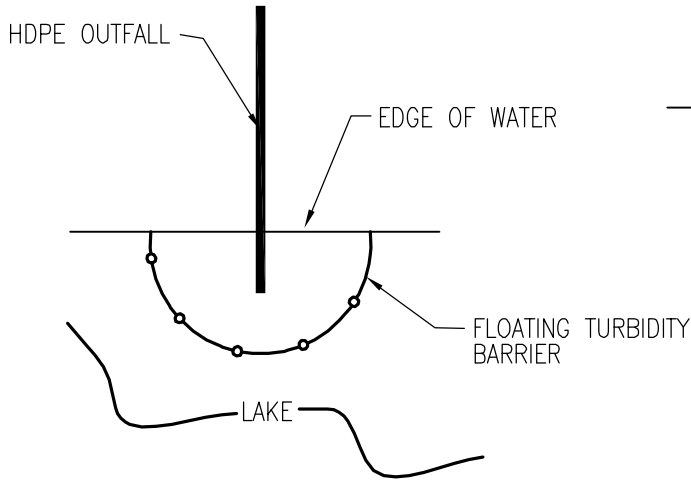
N.T.S.



NORTHERN PALM BEACH
COUNTY IMPROVEMENT DISTRICT

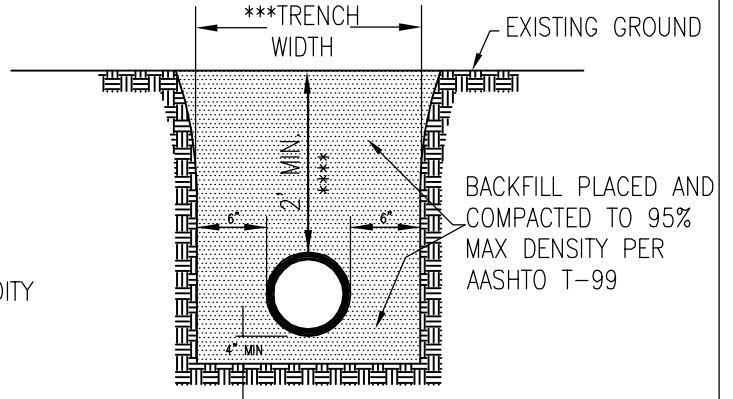
NO.	DATE	REVISIONS
1.		
2.		
3.		
4.		

DATE	6-27-03
SCALE	N.T.S.
DWG. NO.	N-018
DRAWN BY	TNS
CHECKED BY	S.J.L.



POLLUTION CONTROL REQUIREMENTS

NOT TO SCALE

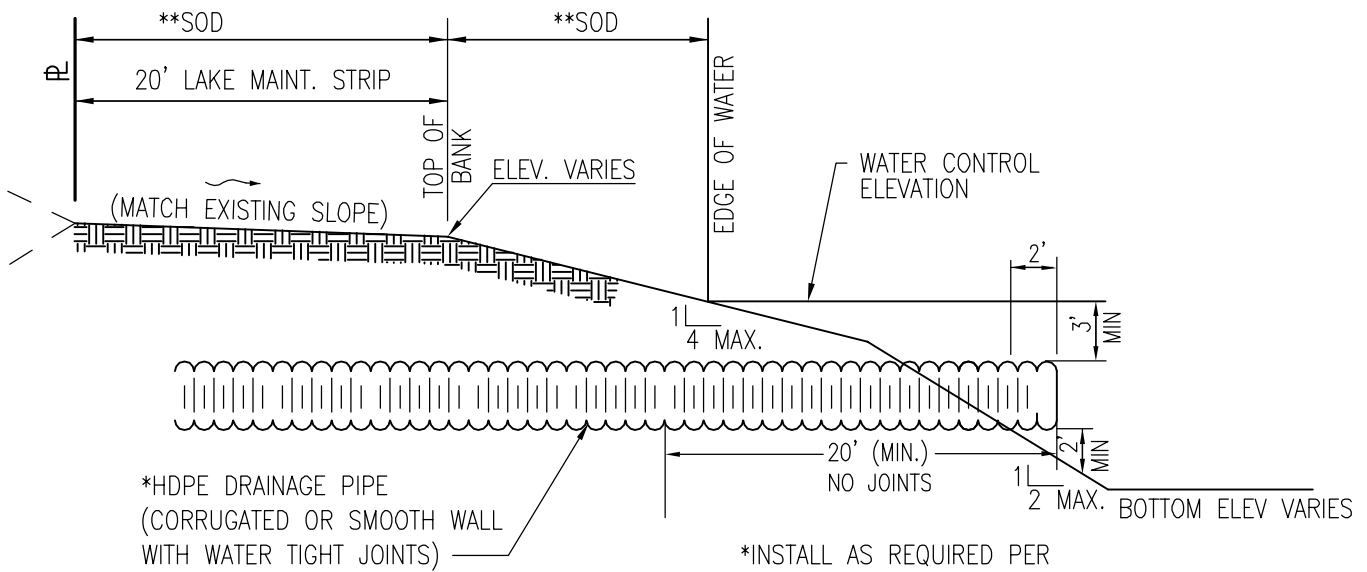


***TRENCH WIDTH= PIPE DIAMETER+1 FOOT

****BURY DEPTH TO BE A MINIMUM OF 2 FEET

PIPE BACKFILL REQUIREMENTS

ROOF/YARD DRAINS ONLY
NOT TO SCALE



*INSTALL AS REQUIRED PER PIPE BACKFILL DETAIL (THIS SHEET)

**ALL BANKS TO BE IMMEDIATELY SODDED TO AVOID EROSION OF SLOPES

TYPICAL ROOF/YARD DRAIN OUTFALL TO LAKE

NOT TO SCALE

REV:	--
FIELD:	N/A
DRAWN:	KAL
APPR:	RWL



**NORTHERN PALM BEACH COUNTY
IMPROVEMENT DISTRICT**

SCALE:	N.T.S.
DATE:	AUG 2009
P.A.NO.	WF0590
DR. NO.	N-019