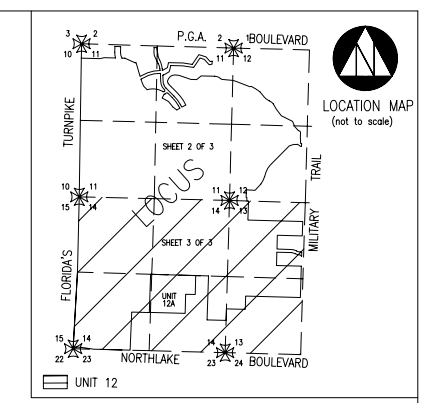
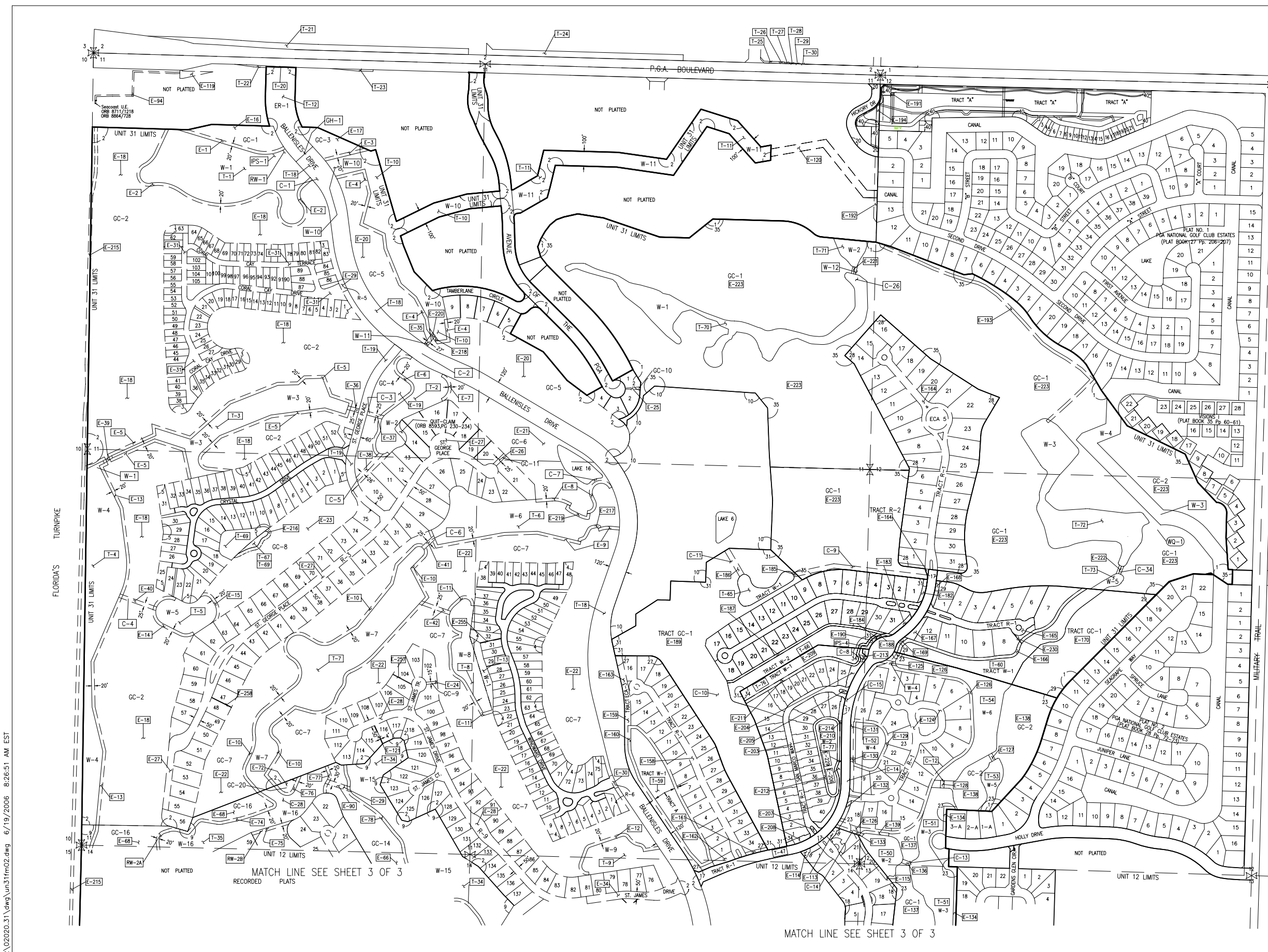


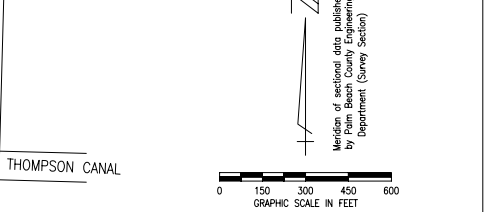
No.	TYPE	RECORDING DATA	INST. DATE	RECORDING DATE	REMARKS
E-1	MMAE	ORB 6229/1258-1278	08-09-89	10-17-89	BLANKET ACCESS EASEMENT GOLF COURSE PARELS
E-1	MMAE	ORB 6229/1258-1278	08-09-89	10-17-89	MMAE, RELEASED BY PB 92/156-137
E-1	MMAE	PB 64/67-81			
E-2	"	"	"	"	"
E-3	"	"	"	"	"
E-4	"	"	"	"	P/O REL 11547/35-37
E-5	"	"	"	"	"
E-6	"	"	"	"	"
E-7	"	"	"	"	"
E-8	"	"	"	"	P/O REL 11547/35-34
E-9	"	"	"	"	P/O REL 11547/38-40
E-10	"	"	"	"	"
E-11	"	"	"	"	"
E-12	"	"	"	"	MMAE ALSO IN PART IN UNIT 12
E-13	"	"	"	"	"
E-14	"	"	"	"	"
E-15	MMAE	"	"	"	"
E-16	GC&E	"	"	"	TRACT GC-1 ALSO A MMAE
E-17	"	"	"	"	TRACT GC-3 ALSO A MMAE
E-18	"	"	"	"	TRACT GC-2 ALSO A MMAE
E-19	"	"	"	"	TRACT GC-4 ALSO A MMAE
E-20	"	"	"	"	TRACT GC-5 ALSO A MMAE
E-21	"	"	"	"	TRACT GC-6 ALSO A MMAE
E-22	"	"	"	"	TRACT GC-7 ALSO A MMAE
E-23	"	"	"	"	TRACT GC-8 ALSO A MMAE
E-24	"	"	"	"	TRACT GC-9 ALSO A MMAE
E-25	"	"	"	"	TRACT GC-10 ALSO A MMAE
E-26	GC&E	"	"	"	TRACT GC-11 ALSO A MMAE
E-27	IEE	"	"	"	TRACT R-3
E-28	"	"	"	"	IEE ALSO IN PART IN UNIT 12 TRACT R-4
E-29	"	"	"	"	TRACT R-5
E-30	"	"	"	"	TRACT R-6
E-31	IEE	PB 65/119-121	12-11-89		
E-32	MMAE	PB 64/67-81	11-08-89		REVISED TO T-18
E-33	"	"	"	"	REVISED TO T-19
E-34	"	"	"	"	MMAE ALSO IN UNIT 12 ALSO AN IEE
E-35	"	"	"	"	"
E-36	"	"	"	"	"
E-37	"	"	"	"	"
E-38	"	"	"	"	"
E-39	"	"	"	"	"
E-40	"	"	"	"	"
E-41	"	"	"	"	"
E-42	"	PB 64/67-81	11-08-89		
E-43	"	ORB 1362/143	04-07-86	04-20-86	MMAE / UNIT 12 P/O REL 8782/748,8809/107
E-44	"	"	"	"	MMAE ALSO IN UNIT 12
E-45	"	"	"	"	MMAE IN PART OUTSIDE UNIT ALSO IN UNIT 12
E-46	MMAE	ORB 1362/143	04-07-86	04-20-86	MMAE OUTSIDE UNIT ALSO IN UNIT 12
E-47	MMAE	ORB 8550/770-777	04-11-88	04-11-88	MMAE ALSO IN UNIT 12 OUTFALL FOR UNIT 12A
E-48	MMAE	PB 69/195-200	12-18-92		PARTIAL RELEASED SEE E-59
E-49	MMAE	PB 69/195-200	12-18-92		"
E-50	MMAE	PB 69/195-200	12-18-92		"
E-51	MMAE	PB 69/195-200	12-18-92		"
E-52	MMAE	PB 69/195-200	12-18-92		"
E-53	IEE	PB 69/195-200	12-18-92		TRACT R-12
E-54	IEE	PB 69/195-200	12-18-92		TRACT R-13
E-55	MMAE	PB 69/195-200	12-18-92		"
E-56	MMAE	PB 69/195-200	12-18-92		"
E-57	MMAE	PB 69/195-200	12-18-92		"
E-58	LBE	ORB 7819/1517-1535	07-06-93	07-29-93	LANDSCAPE BUFFER EASEMENT PGA BOULEVARD
E-59	MMAE	ORB 8320/374-377	06-22-94	06-24-94	PARTIAL RELEASE E-48 AND ORB 6229/1279
E-60	IEE	PB 73/27-43	07-27-94		TRACT R-15
E-61	"	"	"	"	TRACT R-16
E-62	"	"	"	"	TRACT R-16
E-63	"	"	"	"	"
E-64	IEE	PB 73/27-43	07-27-94		TRACT GC-13 ALSO A GC&E
E-65	MMAE	PB 73/27-43	07-27-94		TRACT GC-14 ALSO A GC&E
E-66	"	"	"	"	TRACT GC-15 ALSO A GC&E
E-67	"	"	"	"	TRACT GC-16 ALSO A GC&E
E-68	"	"	"	"	TRACT GC-17 ALSO A GC&E
E-69	"	"	"	"	TRACT GC-18 ALSO A GC&E
E-70	"	"	"	"	TRACT GC-18 ALSO A GC&E
E-71	"	"	"	"	TRACT GC-19 ALSO A GC&E
E-72	MMAE	PB 73/27-43	07-27-94		TRACT GC-20 ALSO A GC&E
E-73	MMAE	PB 73/27-43	07-27-94		PORTION OF GC-16
E-74	"	"	"	"	PORTION OF GC-16
E-75	"	"	"	"	PORTION OF GC-15
E-76	"	"	"	"	PORTION OF GC-20
E-77	"	"	"	"	PORTION OF GC-14
E-78	"	"	"	"	PORTION OF GC-15
E-79	"	"	"	"	PORTION OF GC-13
E-80	"	"	"	"	PORTION OF GC-17
E-81	"	"	"	"	PORTION OF GC-17
E-82	"	"	"	"	PORTION OF GC-18
E-83	MMAE	PB 73/27-43	07-27-94		PORTION OF GC-19
E-84	LE	PB 73/27-43	07-27-94		PORTION OF P-14, PART RELEASE ORB 8579/277-28
E-85	"	"	"	"	PORTION OF ECA-3
E-86	"	"	"	"	PORTION OF ECA-17
E-87	"	"	"	"	PORTION OF ECA-17
E-88	"	"	"	"	PORTION OF ECA-19
E-89	LE	PB 73/27-43	07-27-94		PORTION OF ECA-20
E-90	MMAE	PB 73/27-43	07-27-94		PORTION OF GC-14
E-91	"	"	"	"	PORTION OF GC-16
E-92	MMAE	PB 73/27-43	07-27-94		PORTION OF ECA-11
E-93	IEE	PB 74/53-56	02-01-95		"
E-94	IEE	ORB 8711/1221-1223	03-13-99	04-21-99	"
E-95	IEE	PB 75/65-67	06-27-95		TRACT R-1
E-96	IEE	PB 75/65-67	06-27-95		TRACT D-1
E-97	IEE	PB 75/65-67	06-27-95		TRACT D-2
E-98	IEE	PB 75/65-67	06-27-95		TRACT B
E-99	IEE	PB 75/65-67	06-27-95		MAINTENANCE RESPONSIBILITY
E-100	IEE	PB 75/65-67	06-27-95		MAINTENANCE RESPONSIBILITY
E-101	LE	PB 76/43-44	11-14-95		TRACT ECA-1
E-102	LE	"	"	"	TRACT ECA-2
E-103	MMAE	"	"	"	"
E-104	MMAE	"	"	"	"
E-105	IEE	PB 76/43-44	11-14-95		TRACT R-1
E-106	IEE	PB 76/68-70	11-20-95		TRACT R-1
E-107	IEE	"	"	"	TRACT ECA-3
E-108	MMAE	"	"	"	TRACT A
E-109	LE	"	"	"	TRACT ECA-1
E-110	LE	"	"	"	TRACT ECA-2
E-111	LE	PB 76/68-70	11-20-95		TRACT ECA-5
E-112	IEE	PB 76/73-74	11-20-95		TRACT A
E-113	LE	"	"	"	TRACT ECA-1
E-114	LE	"	"	"	TRACT ECA-2
E-115	MMAE	PB 76/73-74	11-20-95		TRACT B
E-116	MMAE	PB 76/75-76	11-20-95		TRACT ECA-4
E-117	IEE	"	"	"	TRACT A
E-118	LE	PB 76/75-76	11-20-95		EAST PORTION OF TRACT B
E-119	LBE	ORB 8606/774-800	01-25-99	02-02-99	LANDSCAPE BUFFER EASEMENT NORTHLAKE BLVD
E-120	IEE	ORB 9322/780-85	04-03-96	06-24-96	POSITIVE OUTFALL FLOW EASEMENT
E-121	IEE	ORB 9322/231-299	08-07-98	08-09-98	ARATOR EASEMENT
E-122	IEE	ORB 9426/1881-1887	08-07-98	09-05-98	ARATOR EASEMENT
E-123	IEE	ORB 9431/839-845	08-28-98	09-09-98	ARATOR EASEMENT
E-124	IEE	PB 77/38-42	04-12-96		TRACT R-1
E-125	MMAE	"	"	"	TRACT A
E-126	MMAE	"	"	"	TRACT A
E-127	MMAE	"	"	"	TRACT A
E-128	MMAE	"	"	"	TRACT C
E-129	MMAE	"	"	"	ALSO A MMAE
E-130	MMAE	"	"	"	TRACT ECA-B (ALSO A MMAE)
E-131	LE	"	"	"	TRACT ECA-B (ALSO A MMAE)
E-132	LE	PB 77/38-42	04-12-96		TRACT ECA-5

No.	TYPE	RECORDING DATA	INST. DATE	RECORDING DATE	REMARKS
E-133	MMAE	PB 77/38-42		04-12-96	
E-134	MMAE	"	"	"	TRACT B
E-135	MMAE	"	"	"	"
E-136	MMAE	"	"	"	"
E-137	MMAE	"	"	"	TRACT GC-1
E-138	MMAE	"	"	"	TRACT GC-2
E-139	MMAE	PB 77/38-42		04-12-96	
E-140	LE	PB 78/3-4	09-10-96		TRACT ECA-2
E-141	LE	"	"	"	TRACT ECA-3
E-142	IEE	"	"	"	TRACT R-1
E-143	MMAE	"	"	"	TRACT A
E-144	LE	PB 78/3-4	09-10-96		"
E-145	IEE	PB 77/38-42	04-12-96		TRACT R-1
E-146	LE	"	"	"	"
E-147	LE	PB 77/38-42	04-12-96		"
E-148	IEE	PB 81/103-108	11-21-97		TRACT R-1
E-149	IEE	PB 81/103-108	11-21-97		TRACT R-1
E-150	MMAE	PB 81/103-108	11-21-97		TRACT A
E-151	MMAE	PB 81/103-108	11-21-97		TRACT B
E-152	MMAE	PB 81/103-108	11-21-97		TRACT C
E-153	LE	PB 81/103-108	11-21-97		TRACT ECA-1
E-154	LE	PB 81/103-108	11-21-97		TRACT ECA-3
E-155	LE	PB 81/103-108	11-21-97		TRACT ECA-6
E-156	LE	PB 81/103-108	11-21-97		TRACT ECA-7
E-157	MMAE/LE	PB 81/103-108	11-21-97		TRACT GC-1
E-158	IEE	PB 83/53-54	08-14-98		TRACT R-1
E-159	IEE	PB 83/53-54	08-14-98		TRACT ECA-3
E-160	MMAE	PB 83/53-54	08-14-98		TRACT A
E-161	LE	PB 83/53-54	08-14-98		TRACT ECA-1
E-162	LE	PB 83/53-54	08-14-98		TRACT ECA-2
E-163	LE	PB 83/53-54	08-14-98		TRACT ECA-3
E-164	IEE	PB 83/71-76	09-09-98		TRACT R-1 & R-2
E-165	IEE	PB 83/146-148	11-06-98		TRACT R-1
E-166	MMAE	PB 83/146-148	11-06-98		TRACT A
E-167	LE	PB 83/146-148	11-06-98		TRACT ECA-1
E-168	LE	PB 83/146-148	11-06-98		TRACT ECA-2
E-169	LE	PB 83/146-148	11-06-98		TRACT ECA-7
E-170	MMAE	PB 83/146-148	11-06-98		TRACT GC-1
E-171	IEE	PB 83/167-170	11-18-98		TRACT S
E-172	MMAE	PB 83/167-170	11-18-98		20' EASEMENT
E-173	MMAE	PB 83/167-170	11-18-98		20' EASEMENT
E-174	MMAE	PB 83/167-170	11-18-98		25' EASEMENT
E-175	MMAE	PB 83/167-170	11-18-98		18' EASEMENT
E-176	MMAE	PB 83/167-170	11-18-98		35' EASEMENT
E-177	MMAE	PB 83/167-170	11-18-98		20' EASEMENT
E-178	MMAE	PB 83/167-170	11-18-98		20' EASEMENT
E-179	MMAE	PB 83/167-170	11-18-98		20' EASEMENT
E-180	MMAE	PB 83/167-170	11-18-98		44' EASEMENT
E-181	MMAE	PB 83/167-170	11-18-98		25' EASEMENT
E-182	LE	PB 83/185-190	11-25-98		TRACT ECA-5
E-183	LE	PB 83/185-190	11-25-98		TRACT ECA-6
E-184	LE	PB 83/185-190	11-25-98		TRACT ECA-7
E-185	IEE	PB 83/185-190	11-25-98		30' EASEMENT
E-186	MMAE	PB 83/185-190	11-25-98		TRACT A
E-187	MMAE	PB 83/185-190	11-25-98		TRACT A
E-188	MMAE	PB 83/185-190	11-25-98		20' EASEMENT
E-189	MMAE	PB 83/185-190	11-25-98		TRACT GC-1
E-190	MMAE	PB 83/185-190	11-25-98		3



No.	Plot Book/Pages	Title
1	PB 27/182-183	BOUNDARY OF GOLF CLUB SITE OF THE PROFESSIONAL GOLFERS' ASSOCIATION OF AMERICA. (REMAINDER AFTER REPLAT)
2	PB 64/67-81	PLAT ONE HANSEN - JDM
3	PB 64/119-121	PLAT OF CORAL CAY
4	PB 65/129-131	WINDWARD COVE
5	PB 66/18-20	CRYSTAL BAY
9	PB 73/27-43	PLAT THREE, BALLENISLES
10	PB 72/158-159	THE PLAT OF BALLENISLES COUNTRY CLUB
17	PB 76/71-72	PHASE 6 ROADWAY AT BALLENISLES
18	PB 76/73-74	BALLENISLES PARCEL 6B
20	PB 77/122-123	HICKORY DRIVE
23	PB 77/38-42	BALLENISLES POOL 9
27	PB 83/53-54	BALLENISLES POOL 7
28	PB 83/74-76	BALLENISLES POOL 10
29	PB 83/146-148	BALLENISLES POOL 8A
31	PB 83/185-189	BALLENISLES POOL 8B
34	PB 85/100-102	BALLENISLES POOL 6A
35	PB 86/70-74	BALLENISLES EAST GOLF COURSE
40	PB 95/103-105	PGA COMMONS PLAT 2

- NOTES:
- SEE SHEET 1 OF 3 FOR LEGEND, NPBCD EASEMENTS, OWNED TRACTS AND FACILITIES INFORMATION.
  - QUIT CLAIM DEED ORB 8593, PG 230-234.
  - BLANKET EASEMENT (ORB 6229/1258-1278) PARTIAL RELEASE RECORDED IN ORB 8824/769-772 (PLAT NOS. 2, 3, 4, 5, 6, 7, 9, 10 & 11.)
  - AGREEMENT WITH NPBCD FOR INCLUSION OF THE NOT INCLUDED PARCEL RECORDED IN ORB 11053/1853-1859, 11053/1860-1866, 11053/1867-1873 DATED APRIL 14, 1999.



31	03-29-06	MCB	NPBCD FACILITIES UPDATE
30	02-17-05	JCD	NPBCD FACILITIES UPDATE
29	01-05-03	STAFF	ADDED T-74, T-75, T-76, AND T-77
28	02-02	STAFF	ADDED EASEMENT E-255 (3' LIE)
27	MAR 02	MRS	5 YEAR NPBCD FACILITIES UPDATE: C-19, C-21, C-27, C-29 THRU C-36, W-2, W-7
26	02-19-02	MRS	ADD PLAT 37 THRU PLAT 39, E-225 THRU E-254, REL. E-239, REL. DIME 5229/1258-1278, FULL REL. ORB 13237/645-616
23	06-02-00	JTC	ADD PLAT 35, T-70 THRU T-73, E-210 THRU E-223
22	05-01-00	JTC	ADD E-215 THRU E-220, T-67 THRU T-69
21	02-25-00	TDL	PARTIAL RELEASE ORB 11547/35-34, ORB 11547/35-37, ORB 11547/38-40, ORB 11547/81-91, ADD C-27 THRU C-34, MODIFY C-10, W-2 AND W-3
20	08-20-99	TDL	PLAT 33, E-199 THRU E-202, PLAT-34, E-203 THRU E-214
19	01-22-97	AIP	ADD PLATS 25 THRU 32, E-148 THRU E-197, T-56 THRU T-68 AND NOTE 4, 5 YEAR NPBCD FACILITIES UPDATE, ADD IPS-1-4, RW-1,2A,2B, C-7-26, W-4-12, GH-1-3
17	11-11-96	KMB	ADD PLATS 20-24E-120 THRU 147, T-49 THRU 55
16	02-14-96	KMB	ADD E-119
15	01-02-96	KMB	ADD PLATS 15-19E-101-118,43-48
14	12-28-95	MKC	ADD ORB 8609/101,864/728
13	11-07-95	KMB	ADD ADJACENT PLATS
11	8-01-95	KMB	REV. PLAT NO.3 Ref. Add Amend ORB 8606/774, Note # Blanket Easement ORB 8824/769
10	6-23-95	KMB	ADD PLAT 11, T-21, E-38,54, T-39,40,41, ADD SEACAST UE ORB 8711/218, ADD RELEASE ORB 8782/748
9	4-20-95	AIP	ADD SEACAST UE ORB 8640/262, ADD RELEASE ORB 8579/277-291, ADD QUIT CLAIM DEED ORB 8593/230-234
8	12-21-94	AIP	ADD PLAT NO. 10
7	12-1-94	AIP	ADD PLAT NO. 9, E-60 - 92, T-34 - 38, SUR. MET. ORB 8439/7430
5	4-14-94	MHC	ADD T-18 THRU T-30, E-58
3	10-7-92	MHC	T-12 AT P.G.A. BLVD.
2	3-29-92	MHC	UNIT BOUNDARY
1	7-26-91	MHC	T-8 EASE, ORB 6884/356-359
No.	DATE	BY	REVISION

Information shown hereon does not constitute, nor does it represent, a survey of the subject premises.  
 CADD FILE: 02020.31\un31frm02.dwg  
 Y:\Land Projects\R2\02020.31\un31frm02.dwg 6/19/2006 8:26:51 AM EST

FIELD: -  
 DRAWN: SFRN STAFF  
 DESIGNED: -  
 APPROVED: C.A.R.  
 SCALE: AS SHOWN

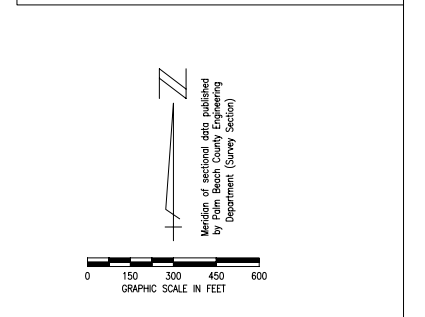
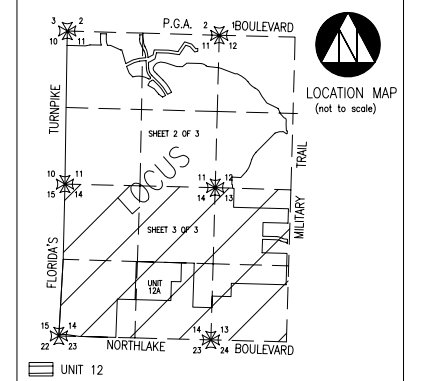


NORTHERN PALM BEACH COUNTY  
 IMPROVEMENT DISTRICT  
 FACILITIES MAP  
 UNIT OF DEVELOPMENT NO. 31  
 IN SECTIONS 11, 12, 13 & 14, T. 42 S., R. 42 E.  
 PALM BEACH COUNTY, FLORIDA

DATE: 06-15-06  
 PA NO.: N3100.70  
 DR. NO.: 42-42-11-23  
 EXHIBIT 31 (2)

MATCH LINE SEE SHEET 3 OF 3

MATCH LINE SEE SHEET 3 OF 3  
 RECORDED PLATS

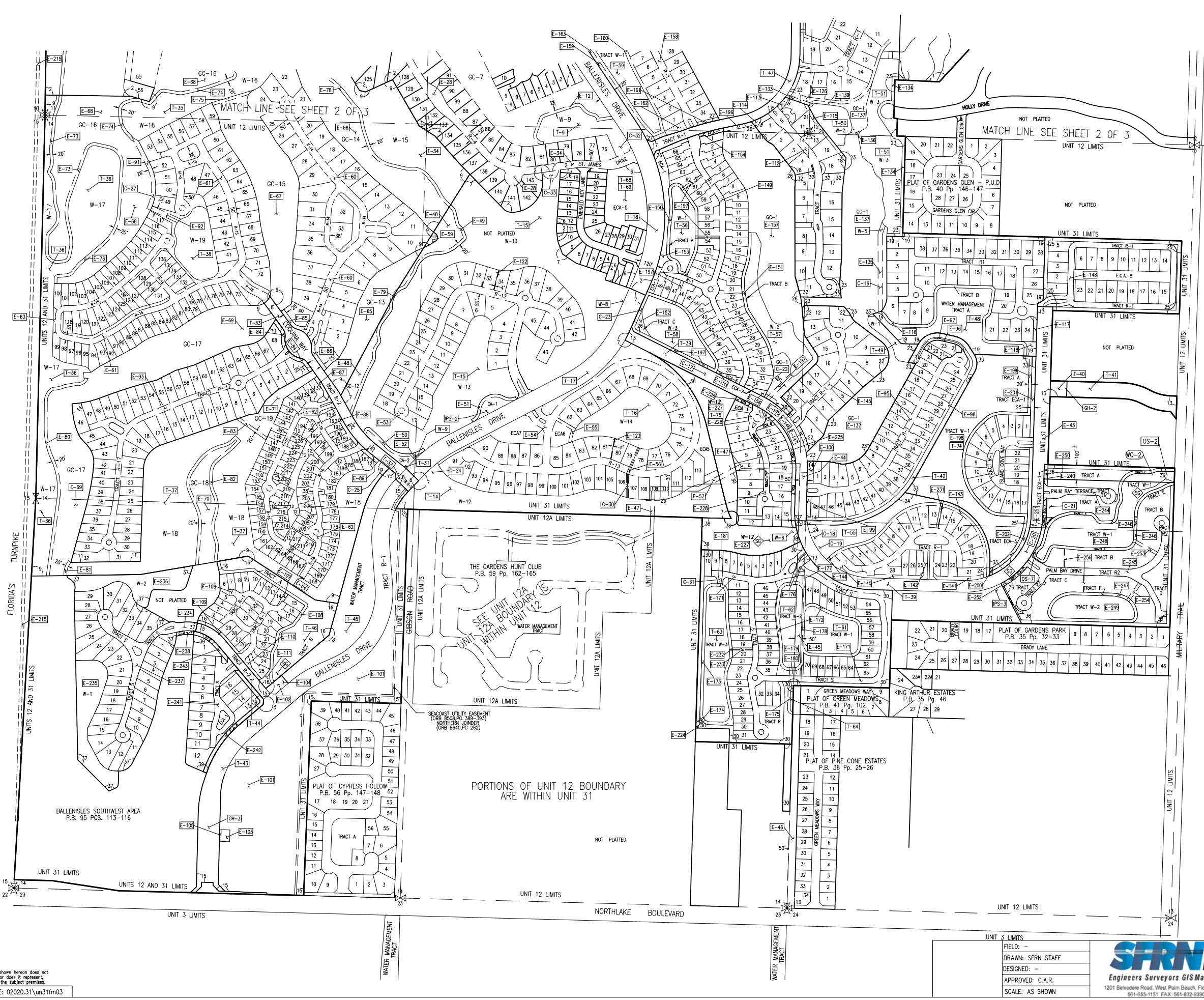


No.	Plat Book/Pages	Title
2	PB 64/67-81	PLAT ONE HANSEN - JIM
6	PB 66/136-137	EMERALD KEY
7	PB 69/195-200	PLAT TWO HANSEN - JIM
8	PB 72/138-139	COQUINA WAY AT BALLENSLES
9	PB 73/27-43	PLAT THREE BALLENSLES
11	PB 74/53-58	BALLENSLES P-14 REPLAT
12	PB 74/132-134	SUNSET BAY, PLAT ONE
13	PB 74/194-195	PHASE 4 ROADWAY AT BALLENSLES
14	PB 75/65-67	PLAT OF BANYAN ISLE AT BALLENSLES
15	PB 76/43-44	PHASE 5 ROADWAY AT BALLENSLES
16	PB 76/68-70	BALLENSLES POD 16B
17	PB 76/71-72	PHASE 6 ROADWAY AT BALLENSLES
18	PB 76/73-74	BALLENSLES PARCEL 68
19	PB 76/75-76	SUNSET BAY AT BALLENSLES
21	PB 77/74-75	REPLAT OF LOTS 22 AND 23 PLAT OF BANYAN ISLE AT BALLENSLES
22	PB 77/36-37	BALLENSLES POD 19B
23	PB 77/38-42	BALLENSLES POD 9
24	PB 78/3-4	VICTORIA BAY AT BALLENSLES (POD 22)
25	PB 81/37-38	PLAT OF BALLENSLES POD 25B
26	PB 81/103-108	BALLENSLES POD 19A
27	PB 83/53-54	BALLENSLES POD
30	PB 83/167-170	BALLENSLES PODS 20A AND 20B
32	PB 84/46-47	BALLENSLES - PARCEL 68 REPLAT
33	PB 85/97-99	BALLENSLES - POD 24
36	PB 89/159-161	BALLENSLES - POD 23
37	PB 90/150-153	BALLENSLES - POD 15
38	PB 92/59-61	BALLENSLES - POD 21
39	PB 92/136-137	BALLENSLES POD 16A

- NOTES:
- SEE SHEET 1 OF 3 FOR LEGEND, NPBCD EASEMENTS, OWNED TRACTS AND FACILITIES INFORMATION.
  - QUIT CLAIM DEED ORB 8593, PG 230-234.
  - BLANKET EASEMENT (ORB 6229/1258-1278) PARTIAL RELEASE RECORDED IN ORB 8824/769-772 (PLATS NOS. 2, 3, 4, 5, 6, 7, 9, 10 & 11).
  - AGREEMENT WITH NPBCD FOR INCLUSION OF THE NOT INCLUDED PARCEL RECORDED IN ORB 11053/1853-1859, 11053/1860-1866, 11053/1867-1873 DATED APRIL 14, 1999.

31	02-20-08	MCS	NPBCD FACILITIES UPDATE
30	02-17-05	JCD	NPBCD FACILITIES UPDATE
29	01-05-04	CAR	ADD PLAT 14, T-751-76, AND T-77
27	04-01-02	MRS	5 YEAR NPBCD FACILITIES UPGRADE, C-19, C-21, C-27, C-29 THRU C-36, W-2, W-7
26	2-19-02	MRS	ADD PLAT 37 THRU PLAT 39, E-225 THRU E-254, REL E-239, REL ORB 6229/1258-1278, FULL REL ORB 1337/645-616
25	8-06-01	CAR	ADD PLAT 36
24	10-11-00	JTC	ADD E-224
22	5-01-00	JTC	ADD E-215 THRU E-220, T-67 THRU T-69
21	2-25-00	TDL	PLAT 33, E-198 THRU E-202, PLAT-34, E-203 THRU E-214, MODIFY C-10, W-2 AND W-3
20	8-20-99	TDL	ADD PLATS 25 THRU 32, E-148 THRU E-197, T-56 THRU T-66 AND NOTE 4
19	1-22-97	AJP	5 YEAR NPBCD FACILITIES UPGRADE, ADD IPS-1-4, RW-1,2A,B, C-7-26, W-4-12, GH-1-3
17	11-11-96	KMB	ADD PLATS 20-24E-120 THRU 147, T-49 THRU 55
15	1-02-96	KMB	ADD PLATS 15-19, E-101-118, T-43-48
12	9-25-95	KMB	ADD PLAT 14E-95-100, T-42
10	6-23-95	KMB	ADD PLAT 11,12,13, E-93,94, T-39,40,41
9	4-20-95	AJP	ADD SEACAST UE ORB 8711/1221
8	8-16-94	MHC	ADD E-59, T-37, T-33 AND PLAT B
7	12-1-94	AJP	ADD PLAT NO. 9 E-60 - 92, T-34 - 38
6	8-16-94	MHC	ADD E-59, T-37, T-33 AND PLAT B
5	4-14-94	MHC	ADD T-18 THRU T-30, E-58
4	8-23-93	MHC	ADD PLAT 7, E-48 - 57, T-14 - 17
3	10-15-92	MHC	PARTIAL RELEASE E-47 ORB 7484/368-375
2	1-29-92	MHC	UNIT BOUNDARY
1	7-28-91	MHC	T-8 EASE, ORB 6884/356-359

DATE: 06-15-06  
 PA NO. N3100.70  
 DR. NO. 42-42-11-23  
 EXHIBIT 31 (3)



FIELD: -  
 DRAWN: SFRN STAFF  
 DESIGNED: -  
 APPROVED: C.A.R.  
 SCALE: AS SHOWN



NORTHERN PALM BEACH COUNTY  
 IMPROVEMENT DISTRICT  
 FACILITIES MAP  
 UNIT OF DEVELOPMENT NO. 31  
 IN SECTIONS 11, 12, 13 & 14, T. 42 S., R. 42 E.  
 PALM BEACH COUNTY, FLORIDA

Y:\Land Projects R2\02020.31\dwg\un31fm03.dwg 6/19/2006 8:30:15 AM EST  
 Information shown hereon does not constitute, nor does it represent, a survey of the subject premises.  
 CADD FILE: 02020.31\un31fm03